

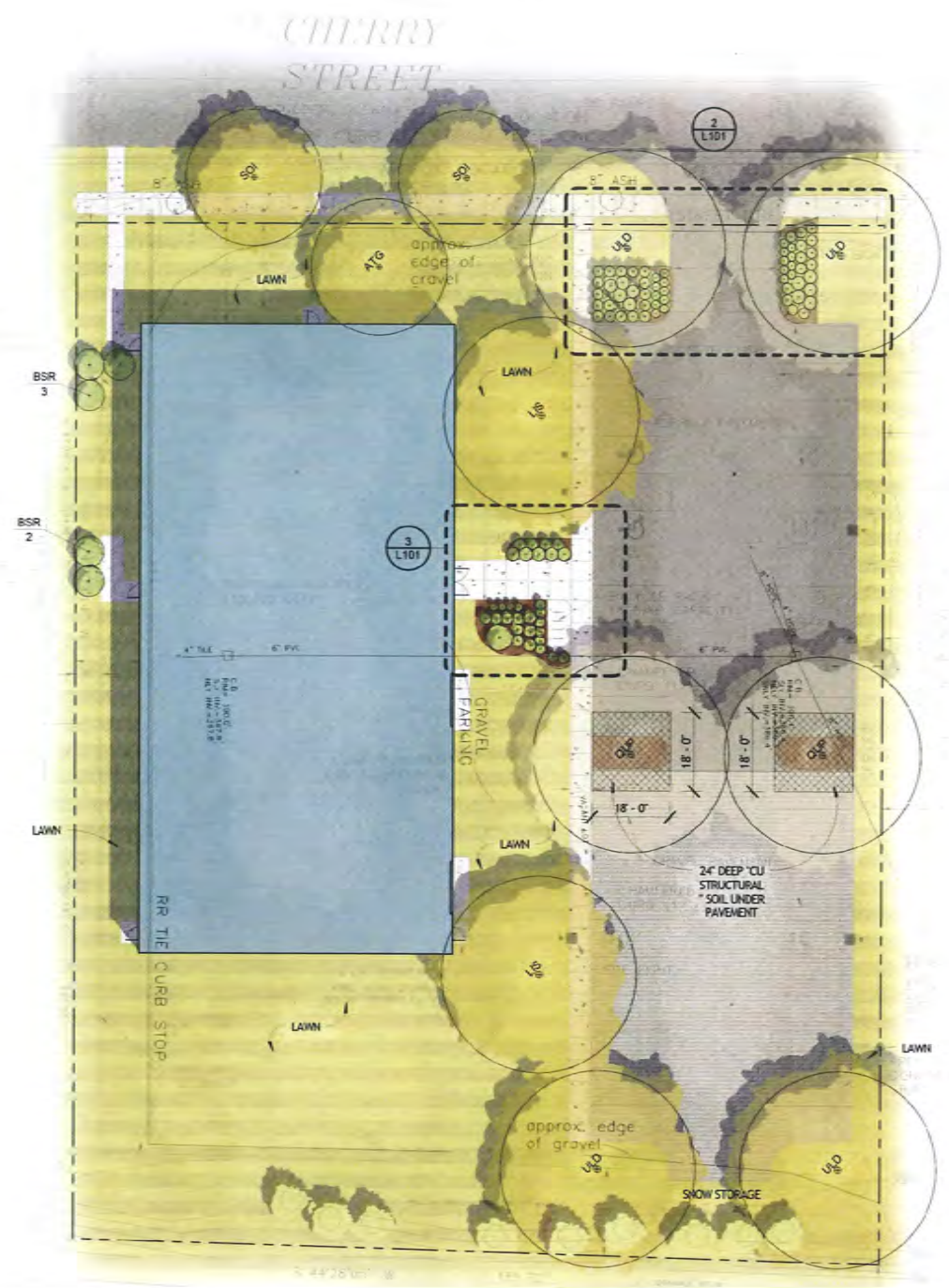


PERSPECTIVE VIEW



AERIAL PERSPECTIVE VIEW

11/1/2013 10:48:14 AM COPYRIGHT STREAM COLLABORATIVE ALL RIGHTS RESERVED

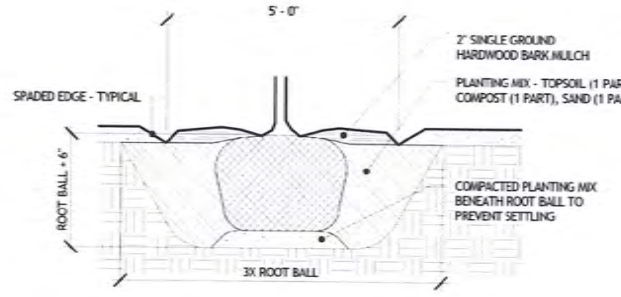


**1 PLANTING**  
1" = 20'-0"

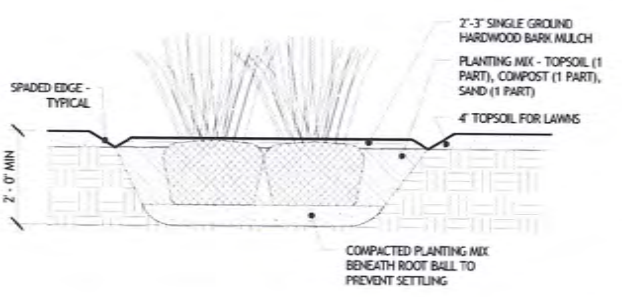
**GENERAL SHEET NOTES - PLANTING**

1. CONSULT LANDSCAPE ARCHITECT ON SHAPE OF BED EDGE & PLACEMENT OF ALL PLANTS PRIOR TO INSTALLATION.
2. ONLY NURSERY-GROWN PLANT MATERIALS SHALL BE ACCEPTABLE. ALL TREES, SHRUBS AND GROUND COVERS SHALL COMPLY WITH APPLICABLE REQUIREMENTS OF ANSI Z60.1, AMERICAN STANDARD FOR NURSERY STOCK.
3. ALL PLANTING BEDS TO BE EXCAVATED TO A MINIMUM DEPTH OF TWO FEET AND REPLACED WITH AMENDED TOPSOIL CONSISTING OF 1 PART SCREENED TOPSOIL, 1 PART COMPOST AND 1 PART SAND.
4. TREE PITS IN LAWN TO BE EXCAVATED TO DEPTH OF ROOT BALL PLUS SIX INCHES AND SHALL BE THREE TIMES THE WIDTH OF THE ROOT BALL.
5. DECIDUOUS TREES SHALL HAVE A CALIPER OF AT LEAST 2 1/2 INCHES AT BREAST HEIGHT (TBH) AT THE TIME OF PLANTING.
6. ALL TREES IN LAWN AREAS TO RECEIVE FIVE-FOOT DIAMETER MULCH RINGS.
7. INSTALL 3 INCHES OF NATURAL SHREDDED BARK MULCH IN ALL PLANTING BEDS.
8. NO PLANTS OR TREES SHALL BE LOCATED BENEATH BUILDING OVERHANGS.
9. SUN/SHADE LAWN MIX - DEEP TILL ANY COMPACTION DUE TO CONSTRUCTION AND INSTALL 4" OF AMENDED TOPSOIL.
10. WARRANTY ALL PLANT MATERIALS FOR A PERIOD OF 1-YEAR BEYOND THE DATE OF SUBSTANTIAL COMPLETION.

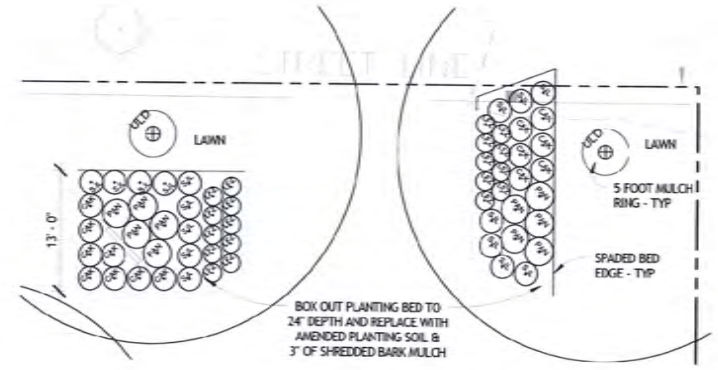
PLANTING SCHEDULE					
KEY	QTY.	BOTANICAL NAME	COMMON NAME	INSTALLED SIZE	MATURE SIZE
<b>TREE</b>					
ATG	1	<i>Acer laticarum</i> ssp. <i>gimnala</i>	Amur Maple	8'-10" TALL	20' tall
LIS	2	<i>Liquidambar styraciflua</i>	Sweetgum	2 1/2" CALIPER	30' tall
OLP	2	<i>Quercus Palustris</i>	Pin Oak	2-1/2" CALIPER	30'-50' tall
SOI	2	<i>Sorbus intermedia</i>	Swedish Mountain Ash	2-1/2" CALIPER	20' tall
ULD	4	<i>Ulmus david ana Discovery</i>	Discovery Elm	2-1/2" CALIPER	30' tall
	11				
<b>SHRUB</b>					
SGM	5	<i>Buxus x 'Green Mountain'</i>	Green Mountain Boxwood	#3 CONTAINER	5' tall, 3' wide
BSR	5	<i>Buxus sempervirens 'Holundfolia'</i>	Holundfolia Boxwood	4" TALL	10' tall, 5' wide
CAH	3	<i>Clethra alnifolia 'Hummingbird'</i>	Hummingbird Summersweet	#3 CONTAINER	3' tall, 3' wide
MYP	1	<i>Myrica pennsylvanica</i>	Northern Bayberry	#5 CONTAINER	9' tall and wide
PAN	10	<i>Picea abies 'Nidiformis'</i>	Nest Spruce	#5 CONTAINER	3' tall, 4' wide
SJL	22	<i>Spiraea japonica 'Little Princess'</i>	Little Princess Spirea	#3 CONTAINER	3' tall, 6' wide
	46				
<b>PERENNIALS</b>					
CAK	26	<i>Calamagrostis x acutiflora 'Karl Foerster'</i>	Feather reed grass	#3 CONTAINER	3' tall, 2' wide
LFZ	23	<i>Leucothoe fontanesiana 'Zebell'</i>	Scarletta Fetterbush	#3 CONTAINER	2' tall, 3' wide
	49				



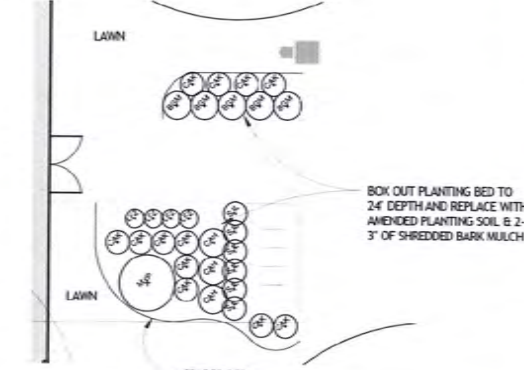
**6 TYPICAL TREE PLANTING**  
1/2" = 1'-0"



**5 TYPICAL PERENNIAL PLANTING**  
1/2" = 1'-0"



**2 ENLARGED DRIVEWAY PLANTING**  
1" = 10'-0"



**3 ENLARGED ENTRY PLANTING**  
1" = 10'-0"