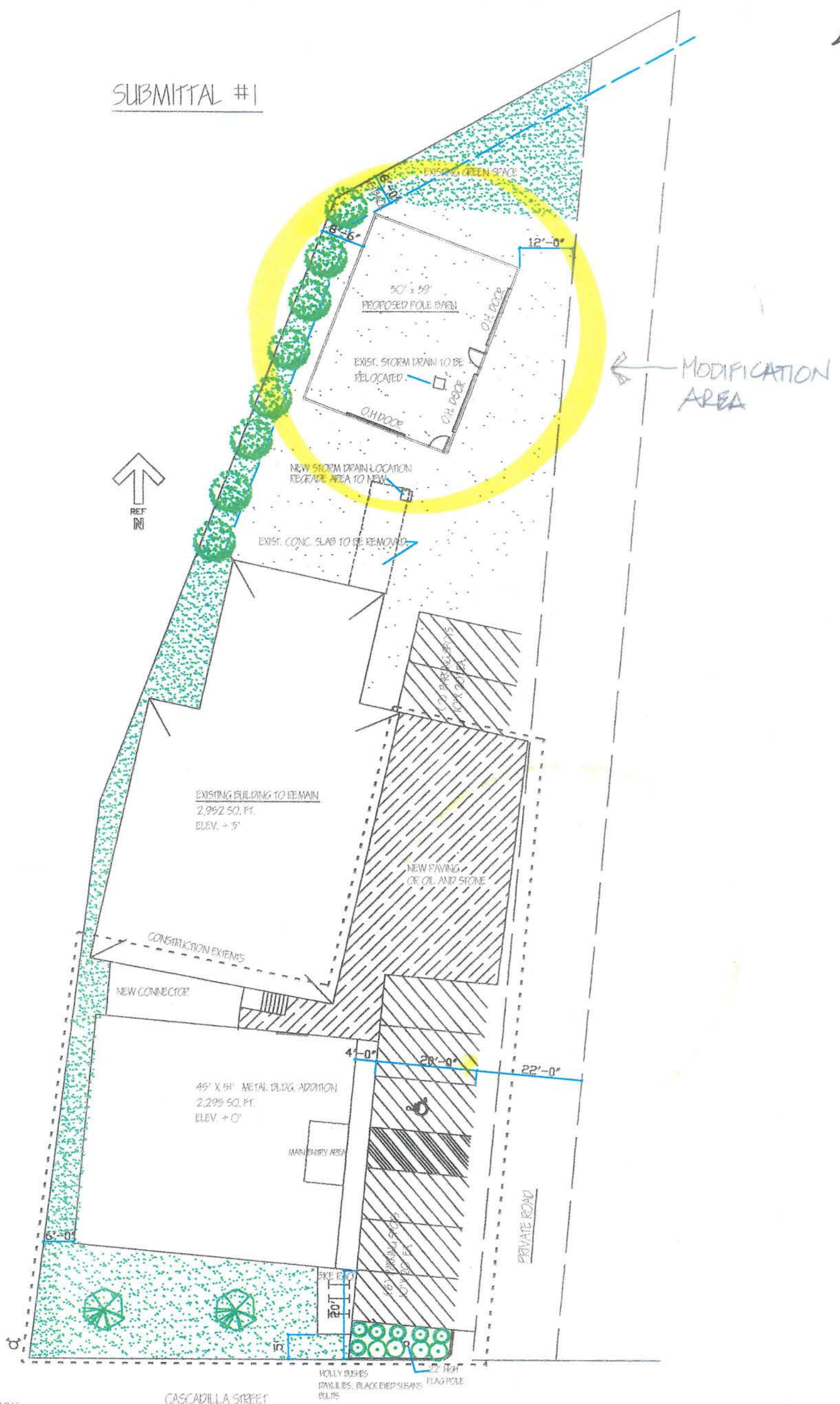


SUBMITTAL #1

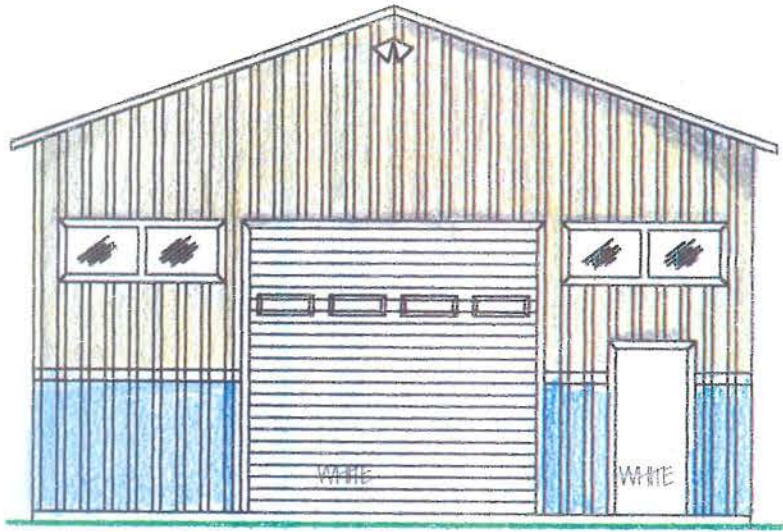


- ASPHALT PAVING OR OIL / STONE
- ASPHALT PAVING
- PEDESTRIAN PAVING
- LOOSE GRAVEL
- CONCRETE
- GRASS
- SCRUB VEGETATION

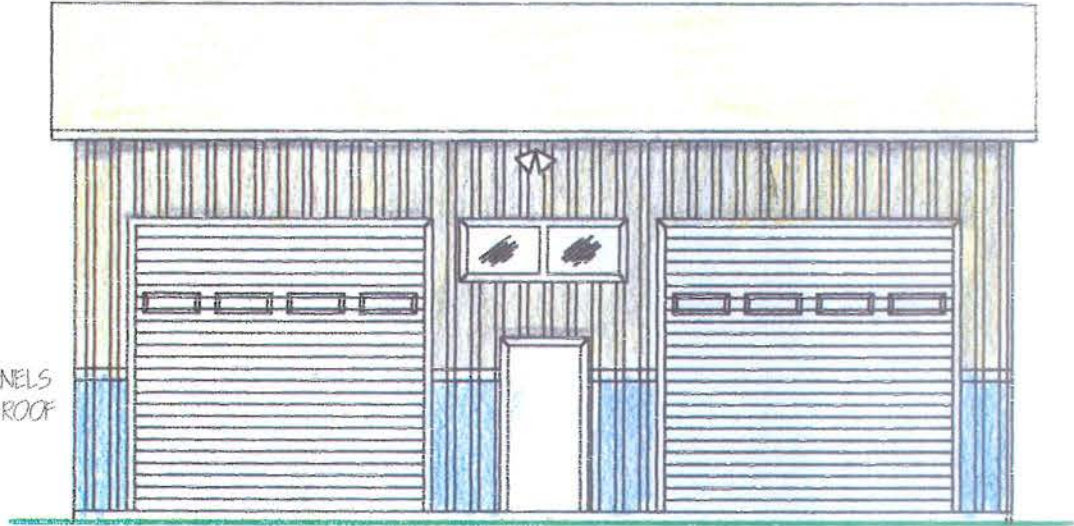
CASCADILLA STREET

CHECK PLOT APRIL 2012

ADDITION-RICK'S RENTAL WORLD- MODIFICATION		
1300 CASCADILLA STREET, ITHACA, NY, 13045		
SCALE 1" = 20'-0"	APPROVED BY	DATE
DATE 8-15-12	REVISED 8-5-13, 8-21-13	PROJECT NO. CIP 1204
PROPOSED SITE PLAN WITH NEW EQUIPMENT BUILDING		
PLACE ARCHITECTS 607-755-6512	DATE	REVISION NO.
10 PINECREST DR., GORHAM, NY, 13045		A-1 of 2

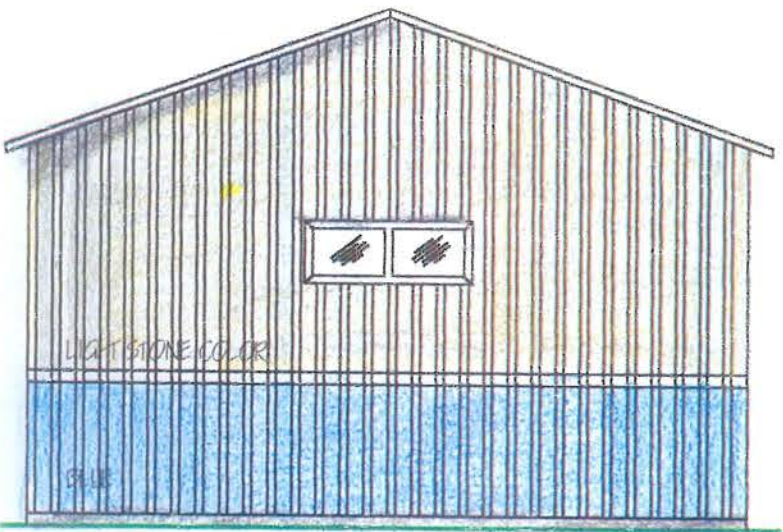


SOUTH

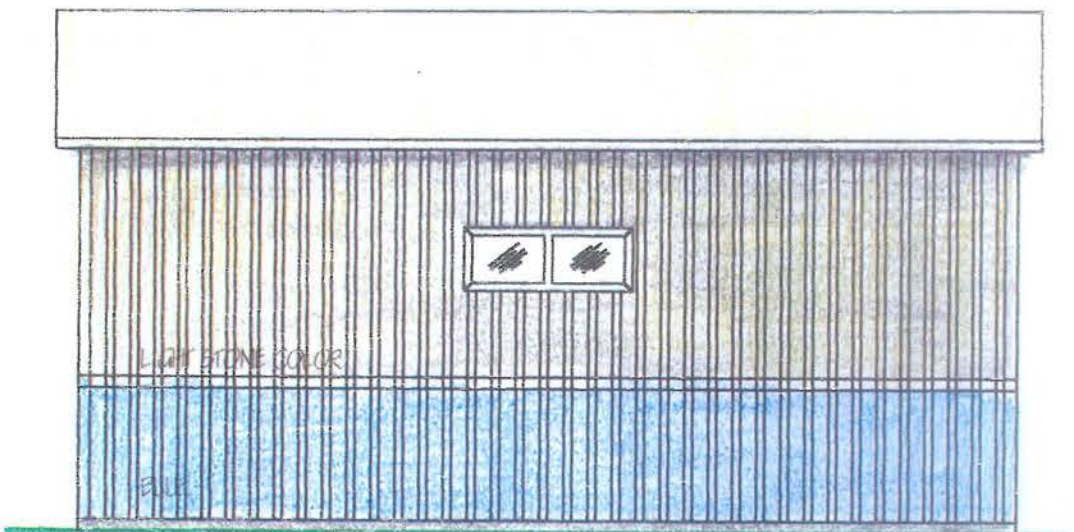


EAST

29 GA. STEEL PANELS
FOR SIDING AND ROOF



NORTH



WEST

ADDITION-RICK'S RENTAL WORLD-MODIFICATION		
800 CASCADILLA STREET, ITHACA, NY, 13045		
SCALE: 1/8" = 1'-0"	APPROVED BY:	DRAWN BY: CTP
DATE: 8-21-13		JOB NO: 1204
EXTERIOR ELEVATIONS-EQUIPMENT BUILDING		
PLACE ARCHITECTS 607-753-6519 10 PINECREST DR., CORTLAND, NY, 13045		DRAWING NO: A-2 OF 2