

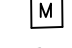
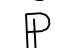

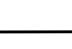



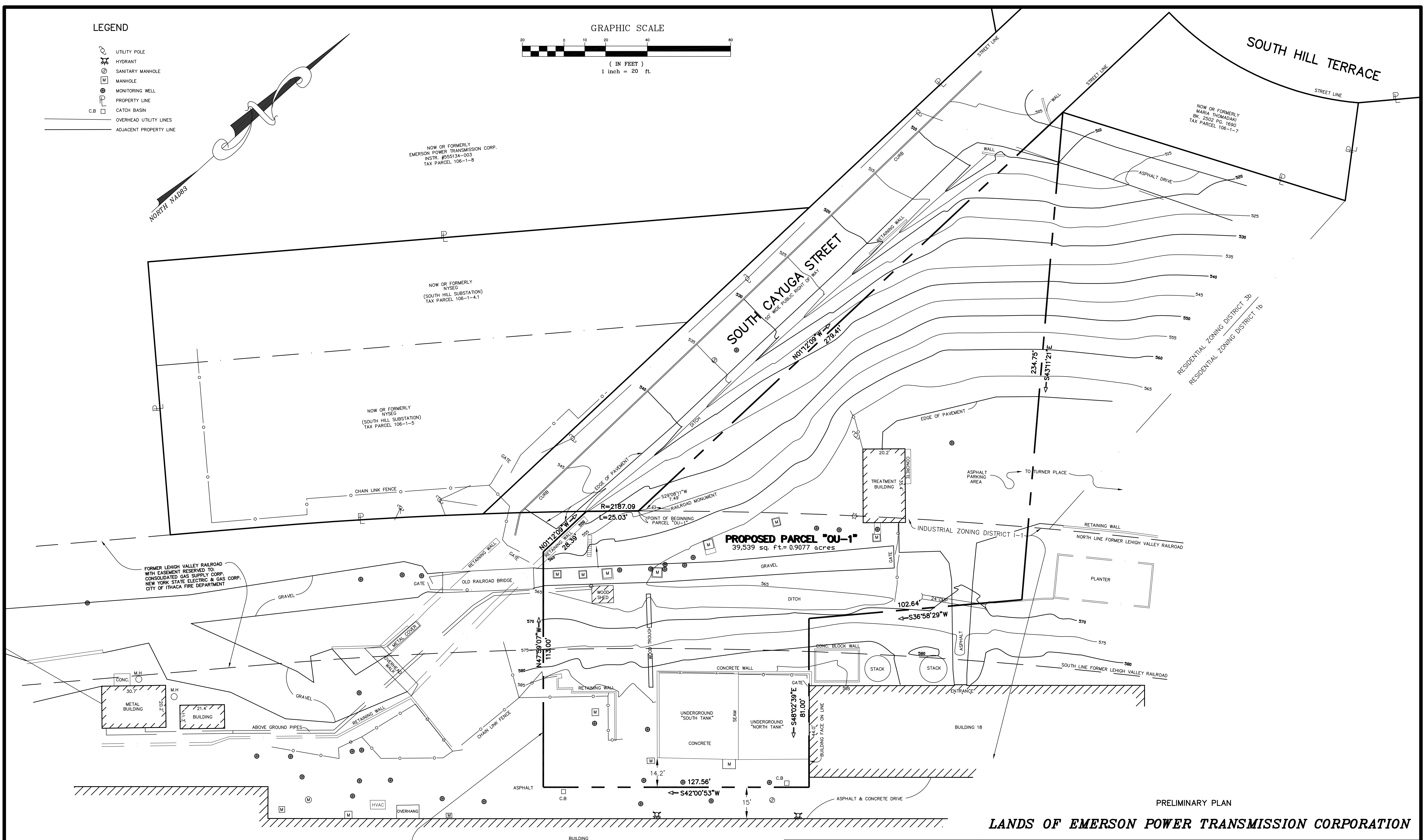
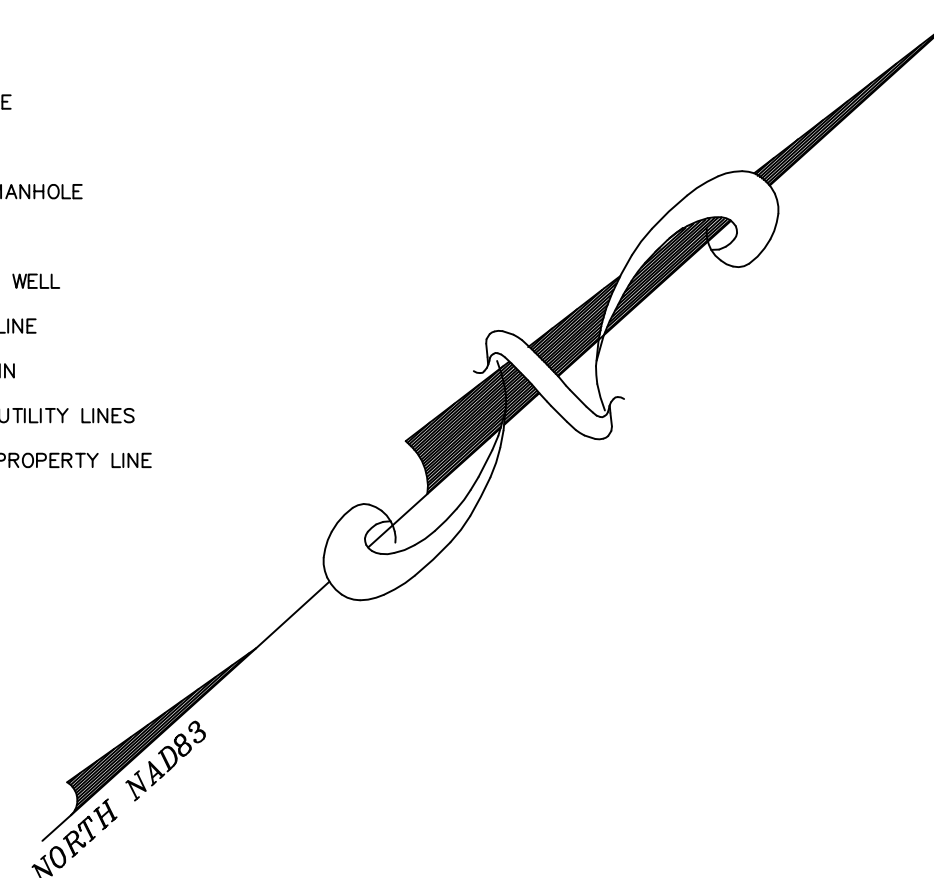
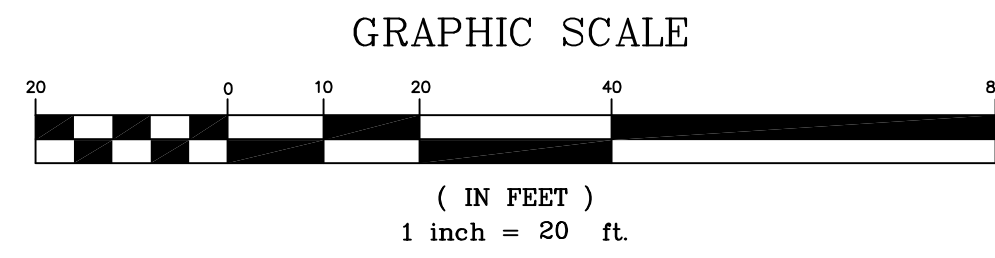


**LEGEND**

-  UTILITY POLE
-  HYDRANT
-  SANITARY MANHOLE
-  MANHOLE
-  MONITORING WELL
-  PROPERTY LINE
-  CATCH BASIN
-  OVERHEAD UTILITY LINES
-  ADJACENT PROPERTY LINE



NOW OR FORMERLY  
EMERSON POWER TRANSMISSION CORP.  
INSTR. #555134-003  
TAX PARCEL 106-1-8

NOW OR FORMERLY  
NYSEG  
(SOUTH HILL SUBSTATION)  
TAX PARCEL 106-1-4.1

NOW OR FORMERLY  
NYSEG  
(SOUTH HILL SUBSTATION)  
TAX PARCEL 106-1-5

NOW OR FORMERLY  
MARIA THOMADAKI  
BK. 2502 PG. 1690  
TAX PARCEL 106-1-7

FORMER LEHIGH VALLEY RAILROAD  
WITH EASEMENT RESERVED TO:  
CONSOLIDATED GAS SUPPLY CORP.  
NEW YORK STATE ELECTRIC & GAS CORP.  
CITY OF ITHACA FIRE DEPARTMENT

**PROPOSED PARCEL "OU-1"**  
39,539 sq. ft. = 0.9077 acres

**PROPOSED PARCEL "OU-2"**  
4,139,471 sq. ft. = 95.0292 acres  
(REMAINING LANDS)

PRELIMINARY PLAN

**LANDS OF EMERSON POWER TRANSMISSION CORPORATION**

CONTOURS PER NORTH AMERICAN VERTICAL DATUM OF 1988 (NAVD 88).  
ONLY COPIES OF THIS SURVEY MADE FROM THE ORIGINAL SURVEY  
WITH THE EMBOSSED SEAL AND SIGNED IN RED INK ARE TRUE AND  
VALID COPIES.  
UNAUTHORIZED ALTERATIONS OR ADDITIONS TO A SURVEY MAP  
BEARING A LICENSED LAND SURVEYOR'S SEAL IS A VIOLATION OF  
SECTION 7209 SUBDIVISION 2, OF THE NEW YORK STATE EDUCATION  
LAW.  
SURVEY PREPARED WITHOUT THE BENEFIT OF AN ABSTRACT  
LOCATION SURVEYS DO NOT INCLUDE THE STAKING  
OF THE PROPERTY CORNERS EXCEPT AS SHOWN.

LANDS OF  
**EMERSON POWER TRANSMISSION CORP.**  
INSTR. #555134-003  
TAX PARCEL 106-1-8

No.	DATE	DESCRIPTION	BY

**LEHR**  
LAND SURVEYORS  
  
LIVERPOOL, NEW YORK  
315-451-3333  
lehrsurveyors@aol.com

I HEREBY CERTIFY THAT THIS IS AN  
ACCURATE MAP MADE FROM AN ACTUAL SURVEY.  
  
LICENSED LAND SURVEYOR  
DOUGLAS R. LEHR NYSL 49223

LOCATION SURVEY ON LANDS OF  
EMERSON POWER TRANSMISSION CORPORATION,  
CITY & TOWN OF ITHACA,  
  
KNOWN AS No. 620 SOUTH AURORA STREET,  
CITY & TOWN OF ITHACA, COUNTY OF TOMPKINS, NY  
DATE: JULY 3, 2013 SCALE: 1"=20' DRAWN BY: TWJ  
REVISIONS: DRAWING No. 12-J-55B  
4D\*