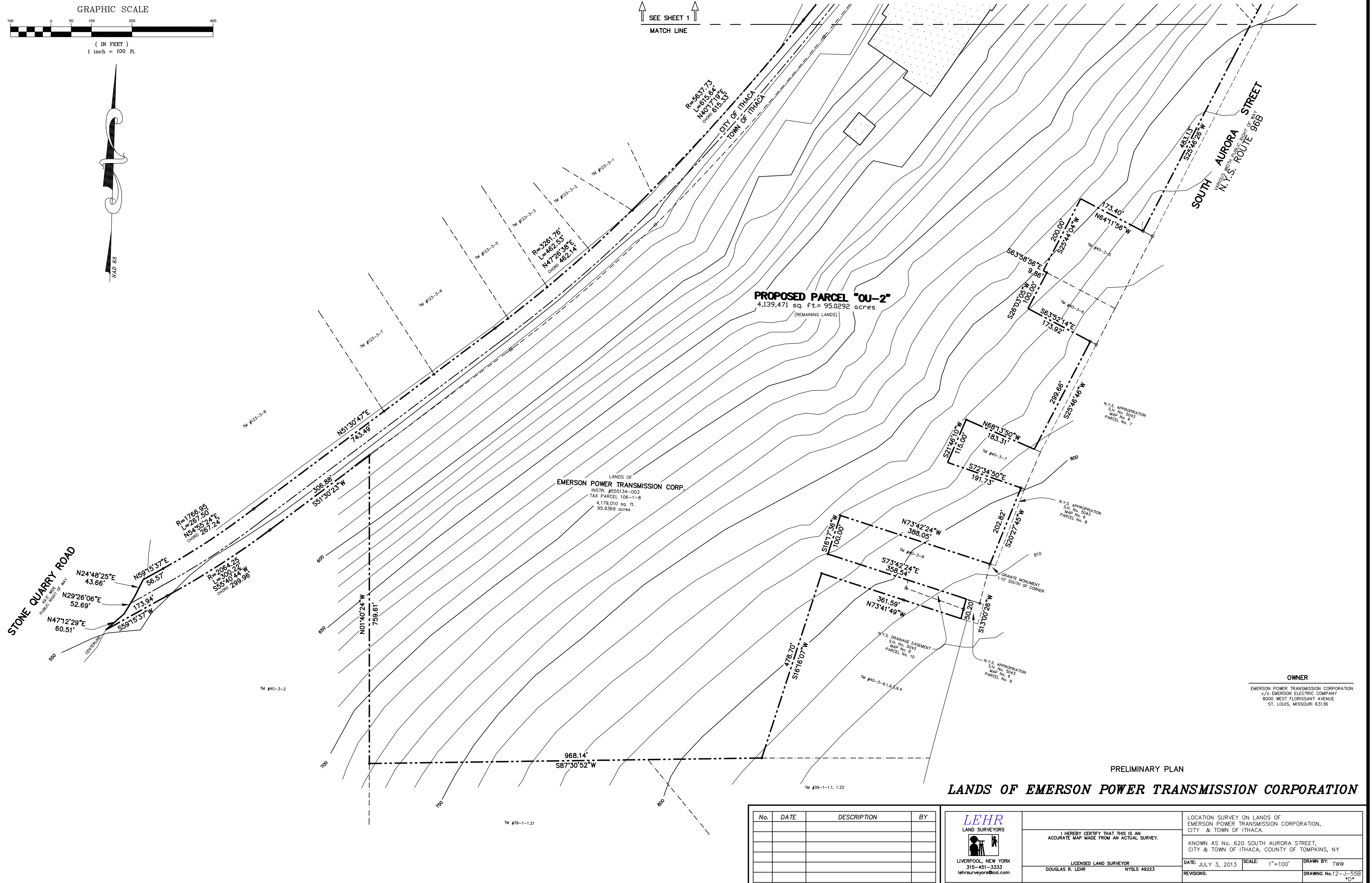


↑ SEE SHEET 1
MATCH LINE



OWNER
EMERSON POWER TRANSMISSION CORPORATION
c/o EMERSON ELECTRIC COMPANY
8000 WEST FLOISSANT AVENUE
ST. LOUIS, MISSOURI 63136

PRELIMINARY PLAN
LANDS OF EMERSON POWER TRANSMISSION CORPORATION

No.	DATE	DESCRIPTION	BY

LEHR
LAND SURVEYORS
LIVERPOOL, NEW YORK
315-451-3333
lehrsurveyors@aol.com

I HEREBY CERTIFY THAT THIS IS AN ACCURATE MAP MADE FROM AN ACTUAL SURVEY.
LICENSED LAND SURVEYOR
DOUGLAS R. LEHR NYSLS 49223

LOCATION SURVEY ON LANDS OF EMERSON POWER TRANSMISSION CORPORATION, CITY & TOWN OF ITHACA.
KNOWN AS No. 620 SOUTH AURORA STREET, CITY & TOWN OF ITHACA, COUNTY OF TOMPKINS, NY
DATE: JULY 3, 2013 SCALE: 1"=100' DRAWN BY: TWW
REVISIONS: DRAWING No. 12-J-55B "D"