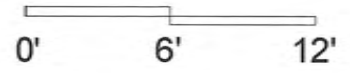


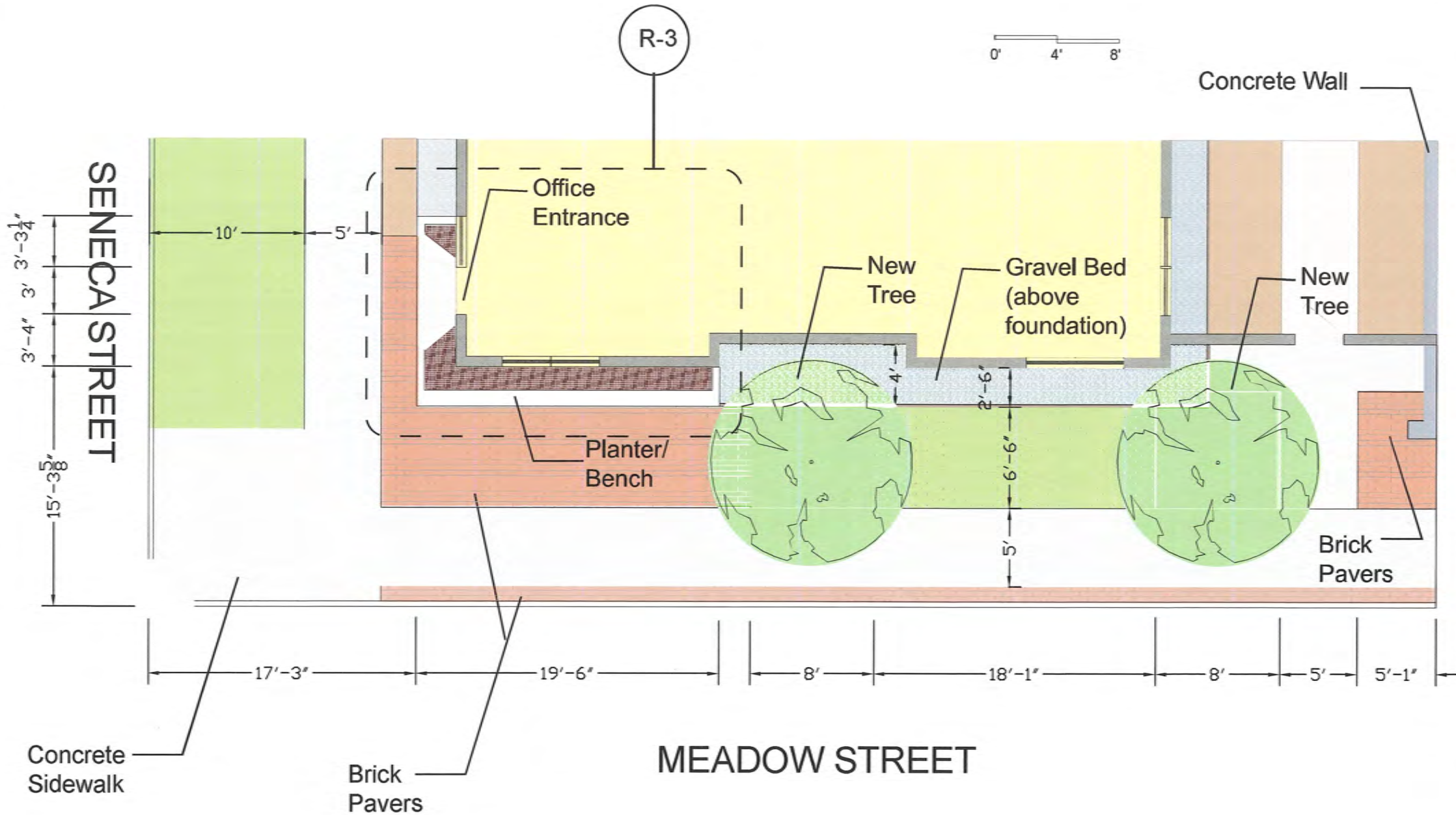


East Elevation (Meadow Street)



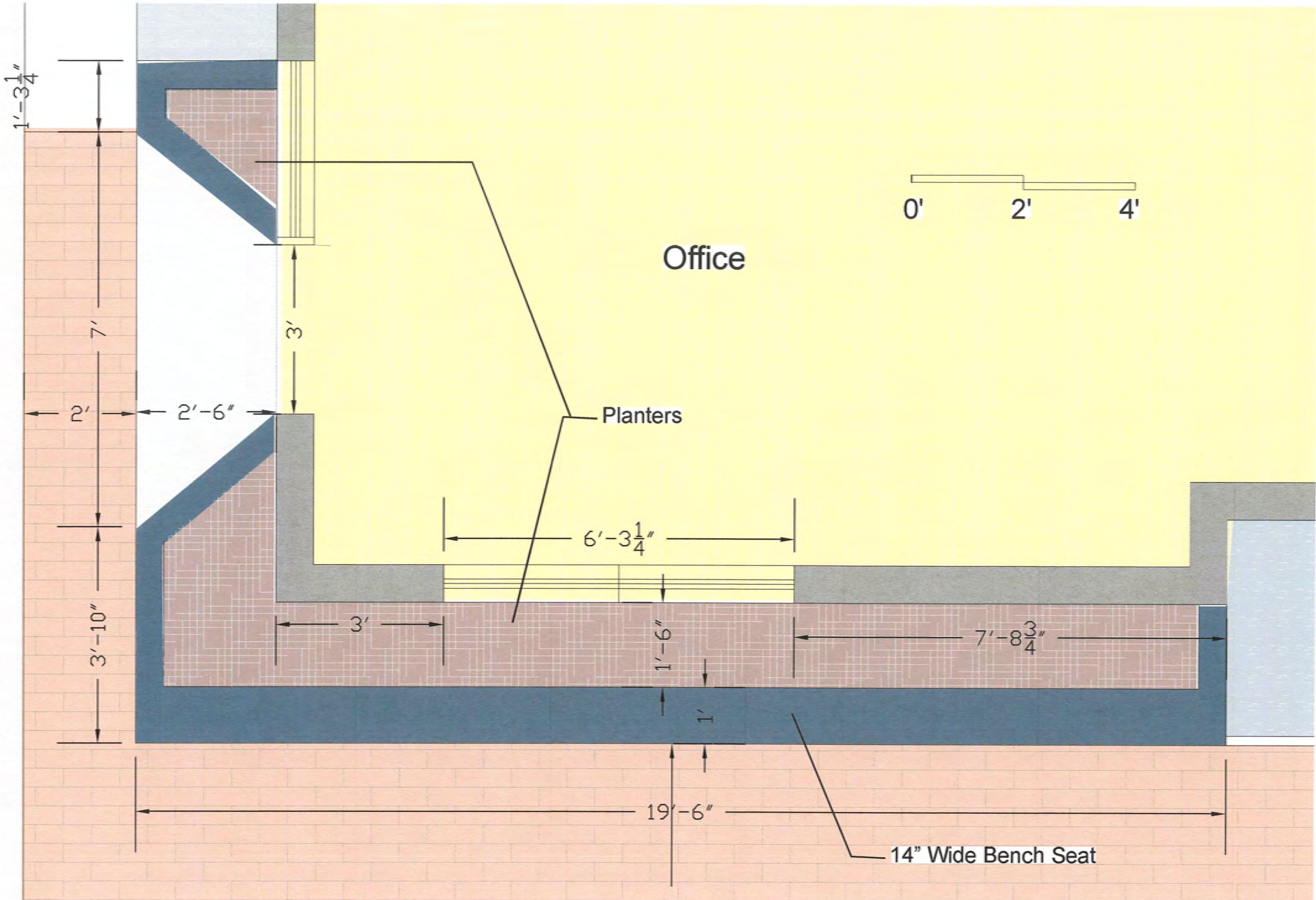
Meadow Street Elevation

R-1



**Meadow
Street
Frontage
Plan**

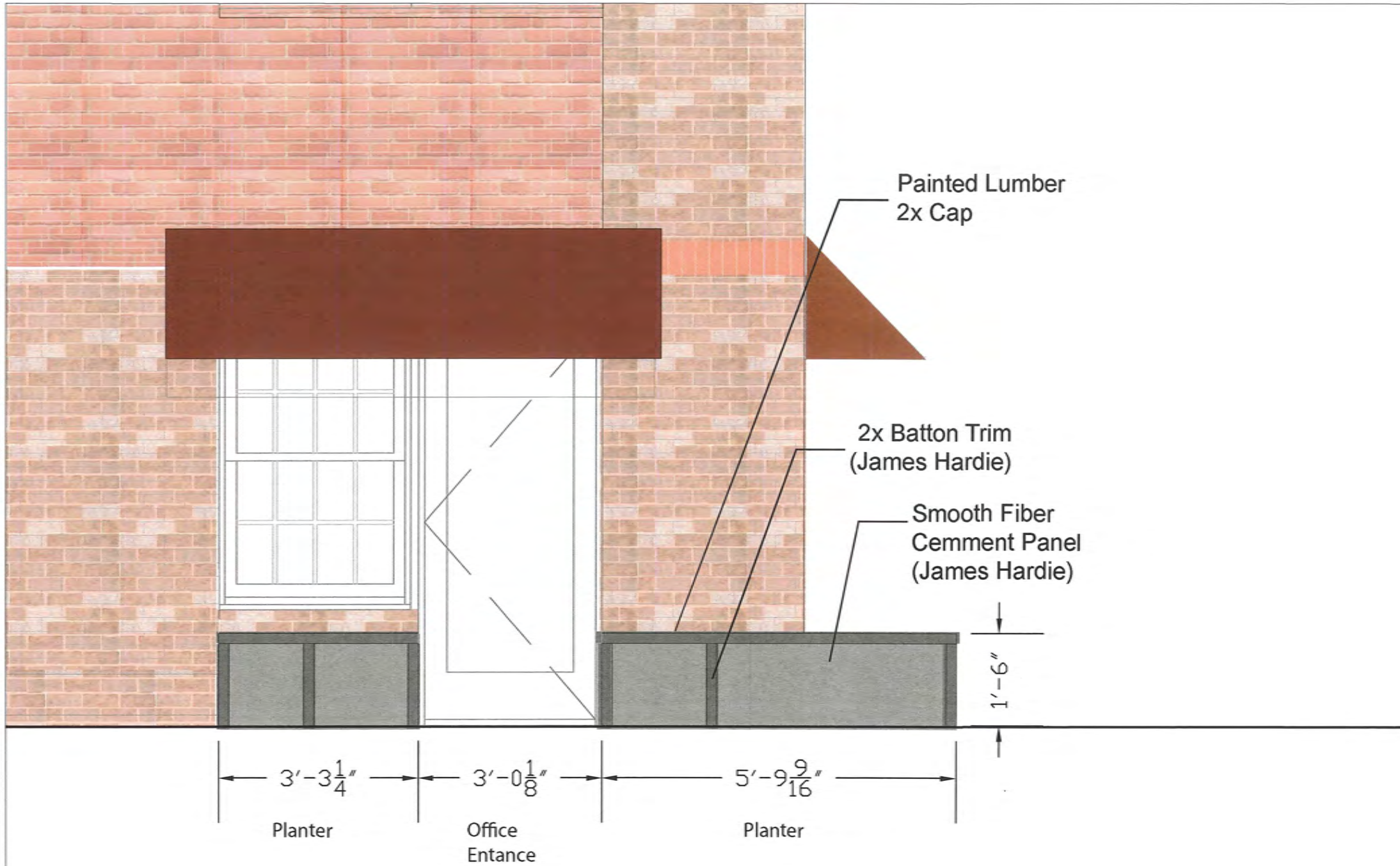
R-2



**Building
Corner
Detail Plan**

R-3





**Seneca
Street
Corner
Elevation
(Office
Entrance)**

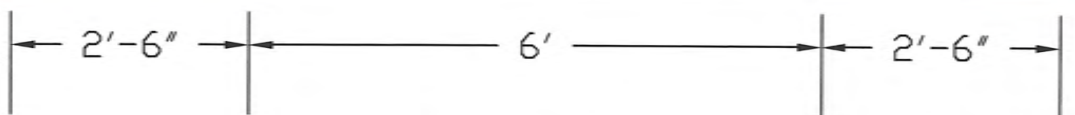
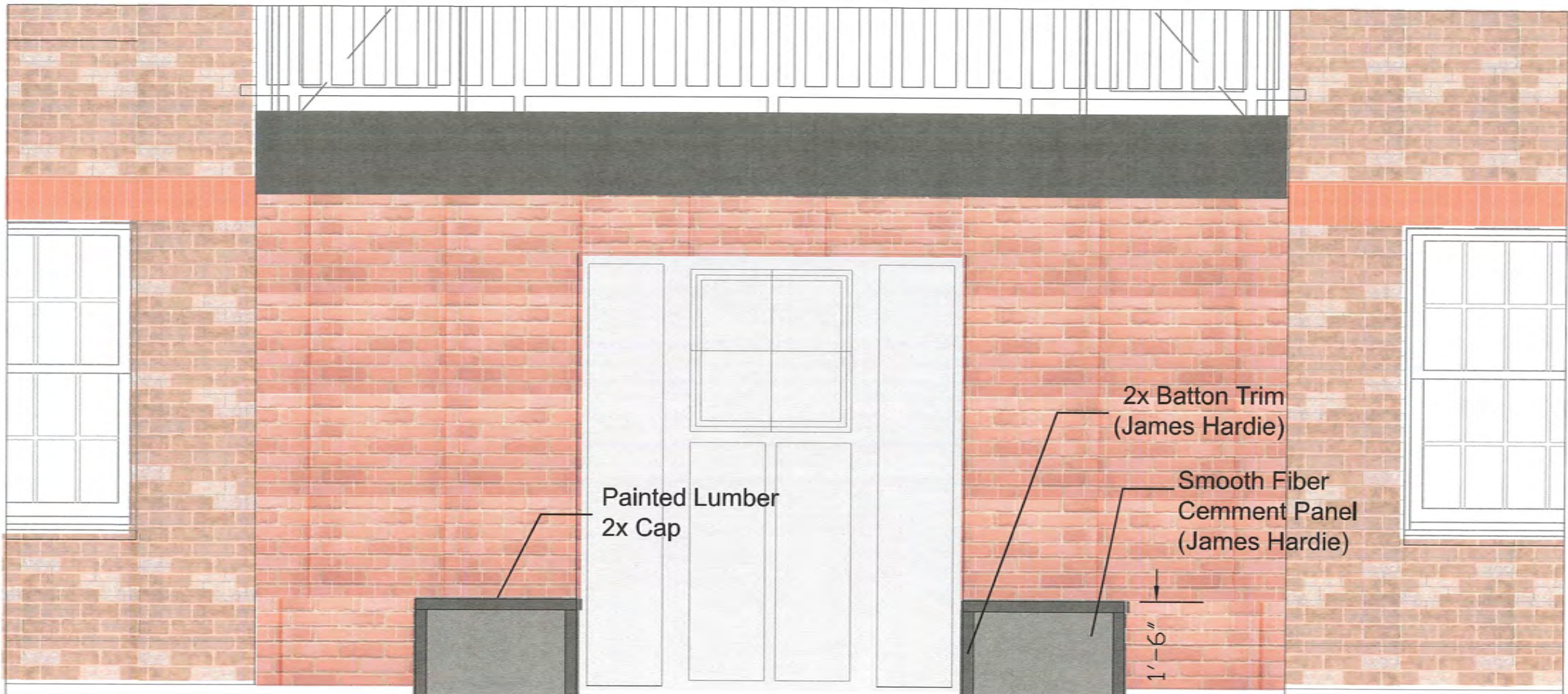
R-5

612 W. Seneca St

Outstanding Site
Issues

Proposed Revisions

8/15/2013



Planter

Building
Entry

Planter

2x Batton Trim
(James Hardie)

Smooth Fiber
Cemment Panel
(James Hardie)

Painted Lumber
2x Cap

**Seneca
Street
Building
Entries**

R-6