

Klarman Hall

(New Humanities Building)

Cornell University

Capital Projects and Planning

Ithaca Planning Board

April 24, 2013

Koetter Kim & Associates



Existing GSH and Arts Quad



Site of Klarman Hall Addition
between GSH and East Ave.



Klarman Hall an addition to GSH

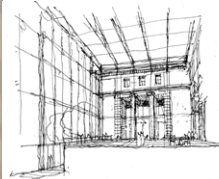
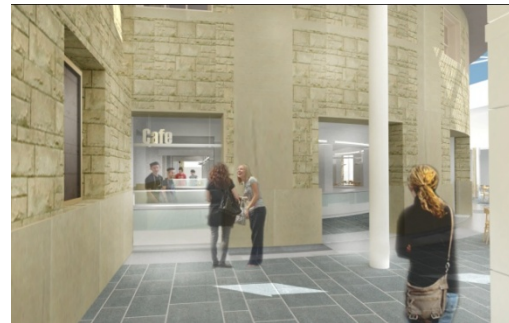
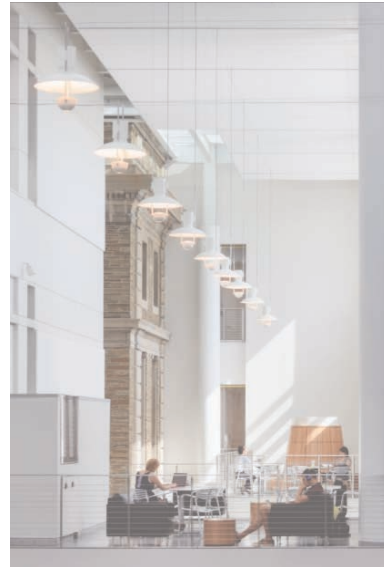
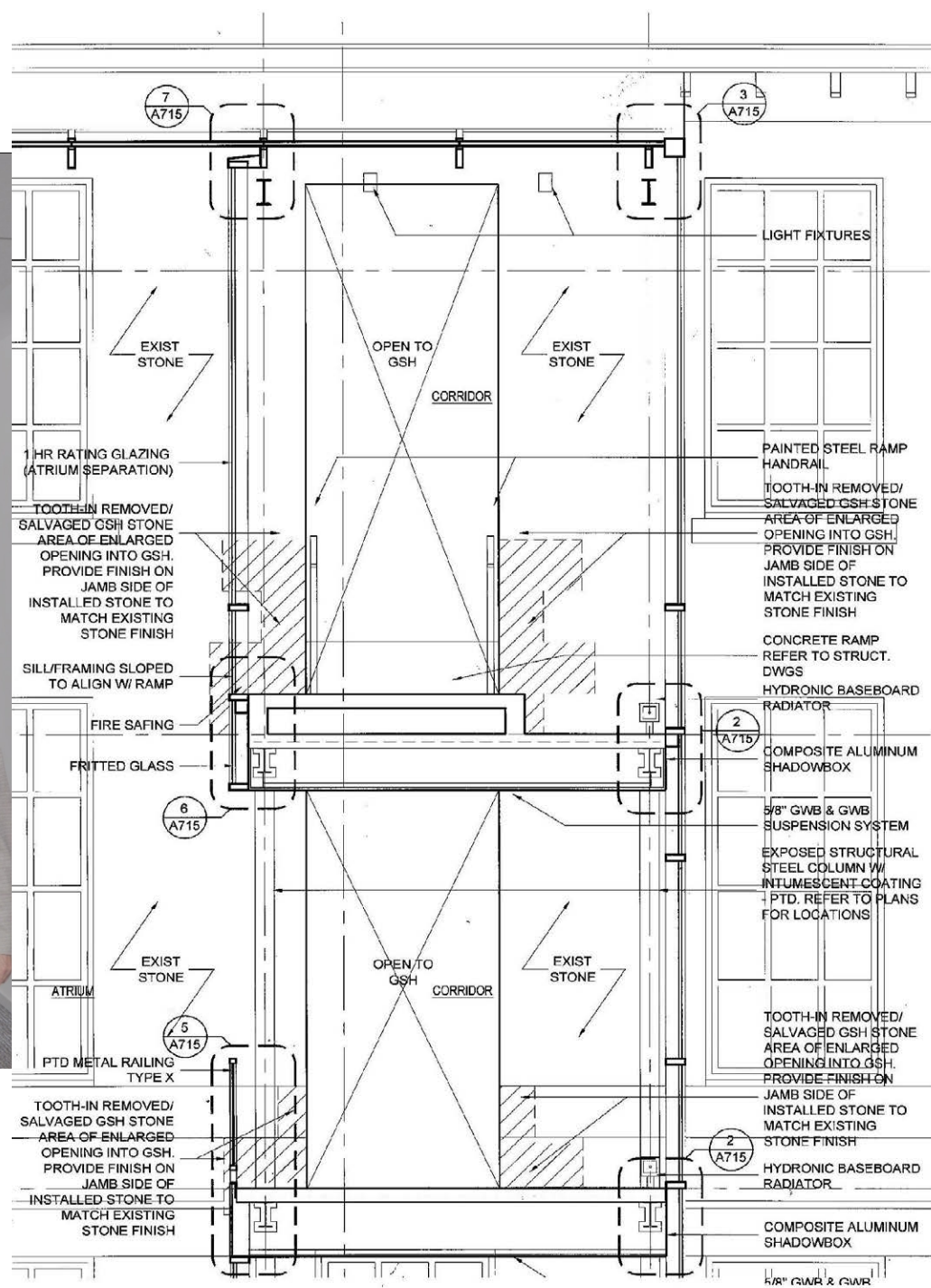




Fig. 5 East Elevation of GSH showing connections at 1st and 2nd floors

Curtain wall abuts existing Goldwin Smith Hall (GSH) at East elevation. Yellow shows opening into GSH. Materials removed which are not re-used will be saved.







Site of Klarman Hall – lawn between GSH and East Ave.



Klarman Hall Atrium



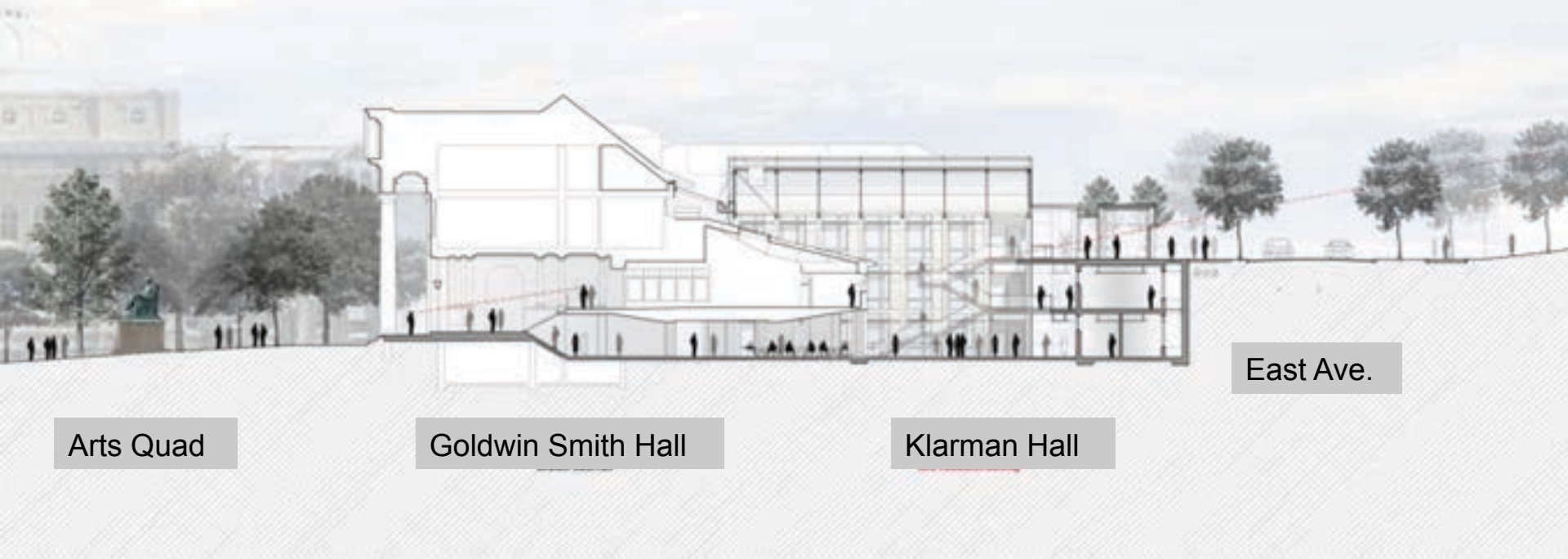
Klarman Hall Atrium



View from Café towards Klarman Hall Atrium



Campus Section thru Arts Quad, GSH, Klarman Hall, and East Ave.



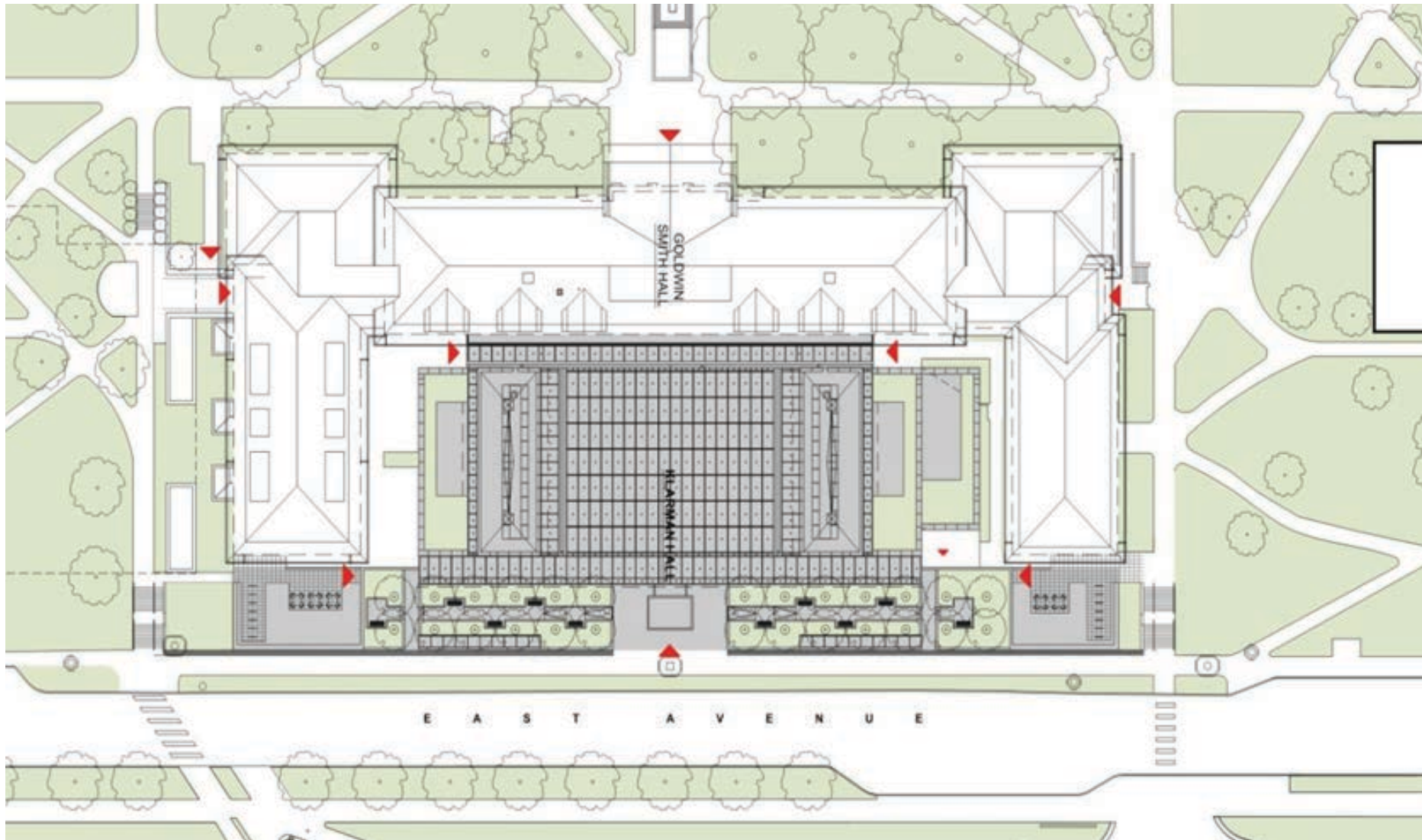
Arts Quad

Goldwin Smith Hall

Klarman Hall

East Ave.

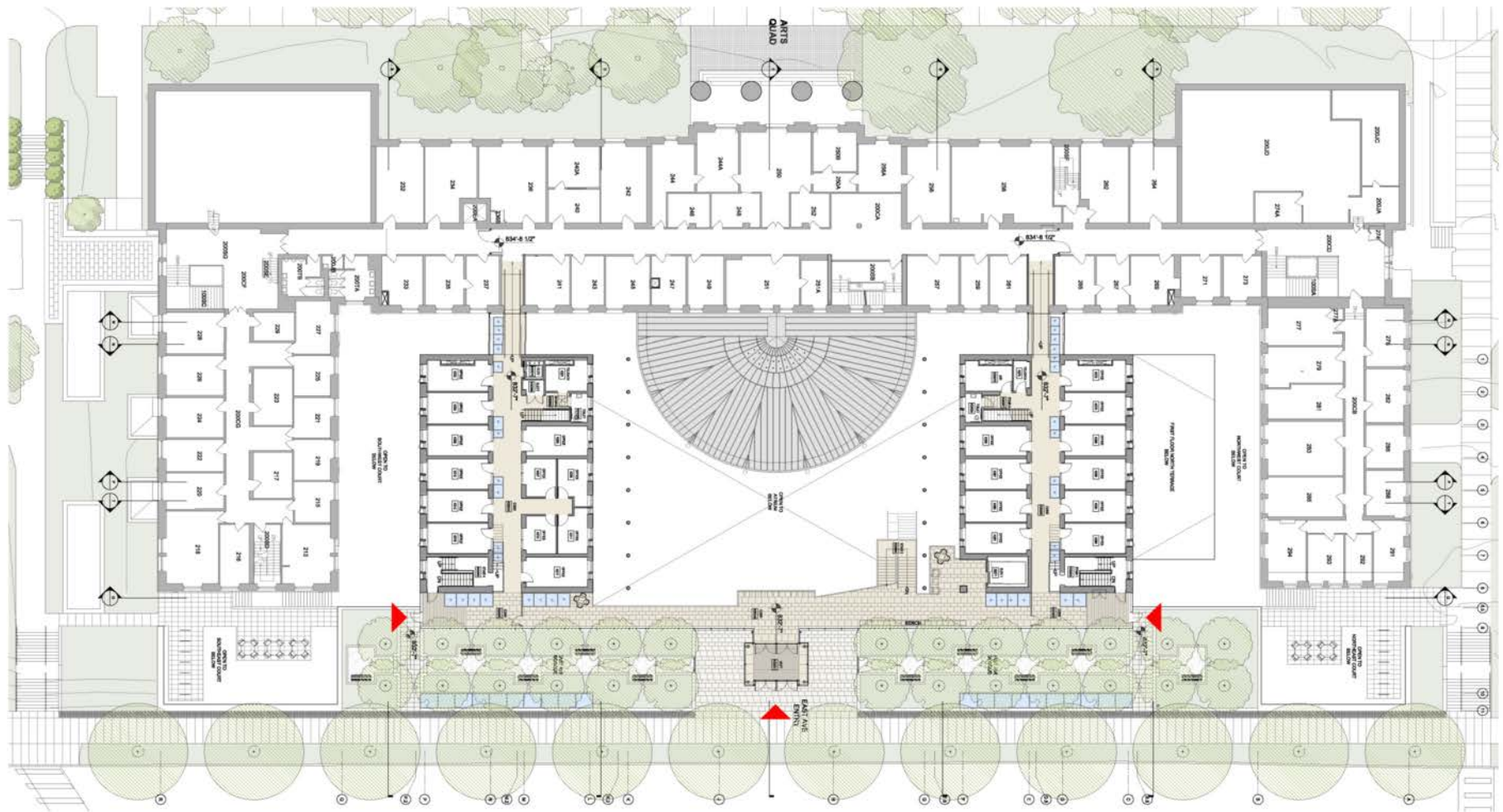
Building Section thru Quad, GSH, Klarman Hall, and East Ave.



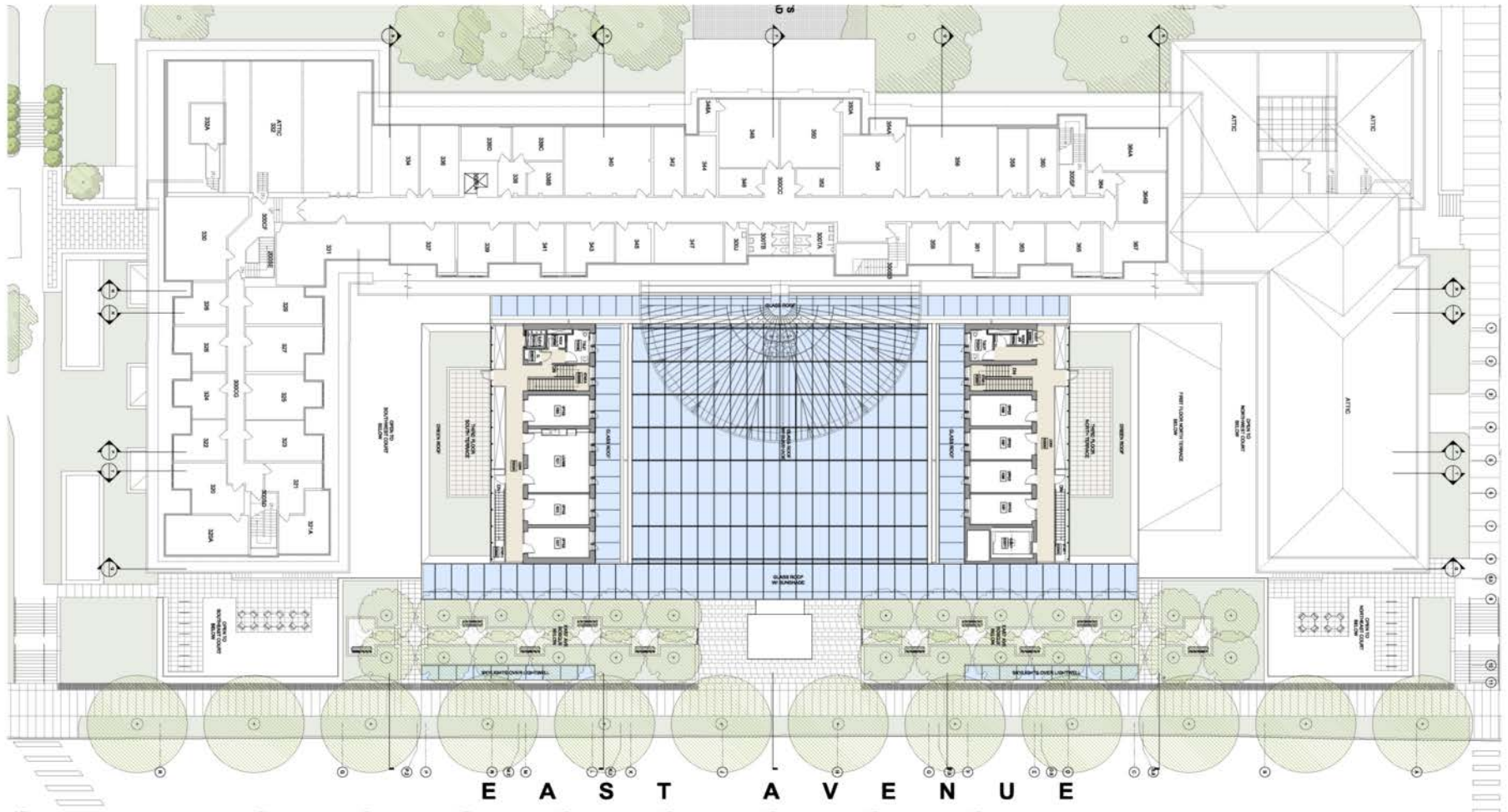
Klarman Hall Site Plan



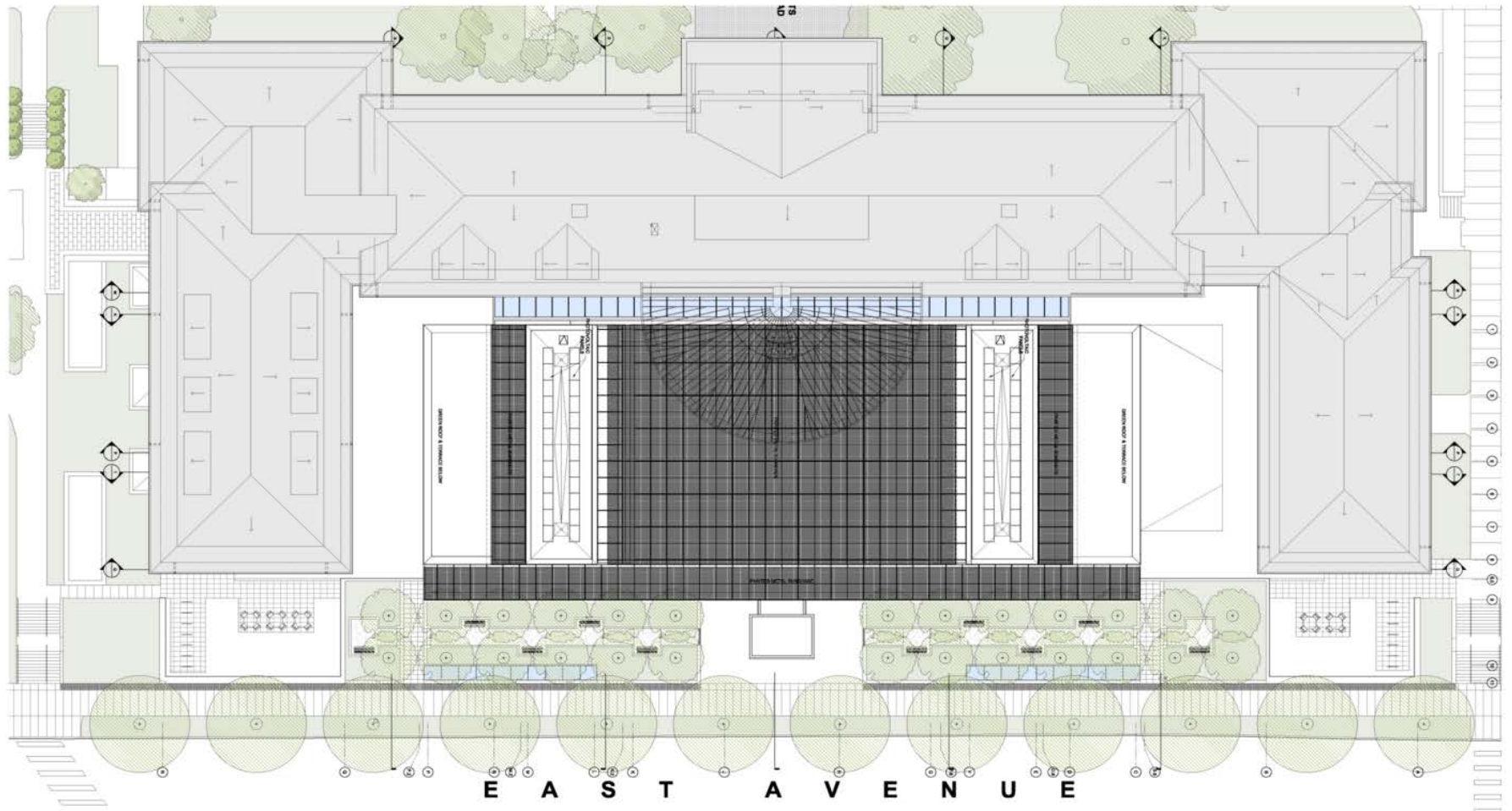
Klarman Ground Floor Plan



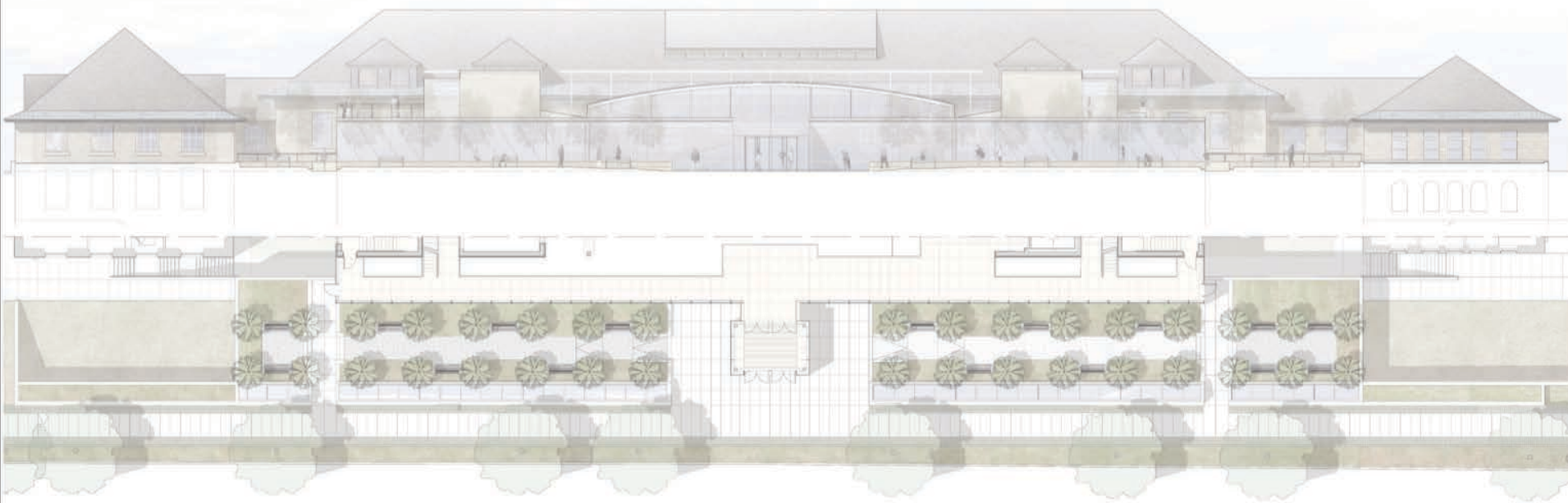
Klarman Second Floor Plan



Klarman Third Floor Plan



GSH – Klarman Hall Roof Plan



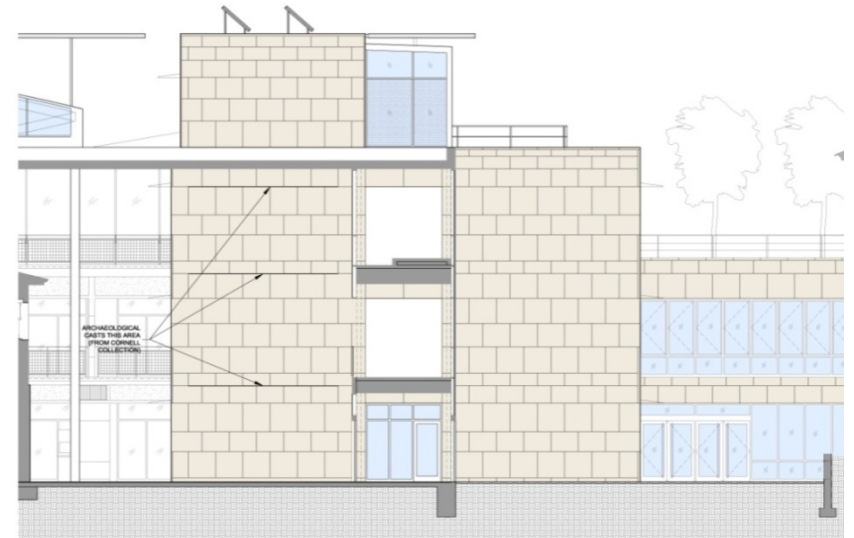
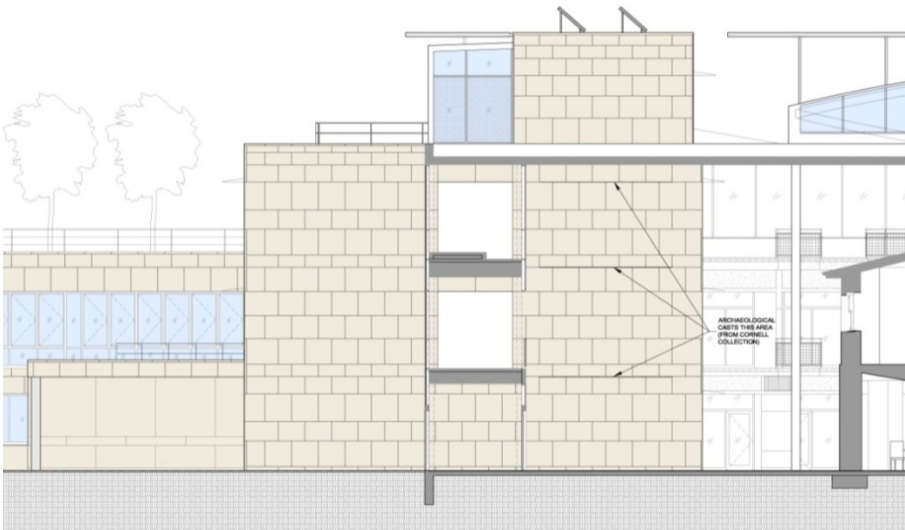
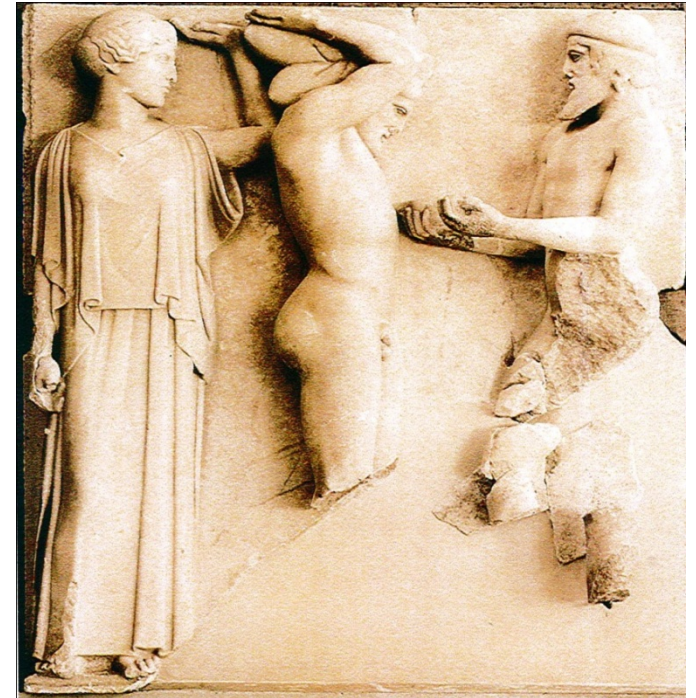
East Klarman Hall Elevation at East Avenue



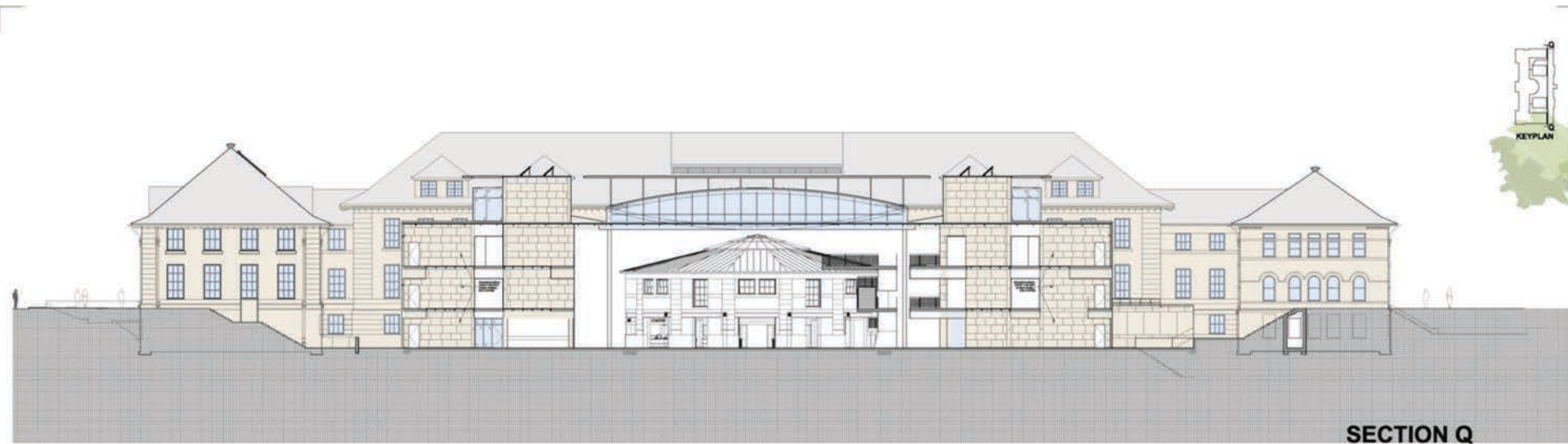
South & North Klarman Hall Elevations



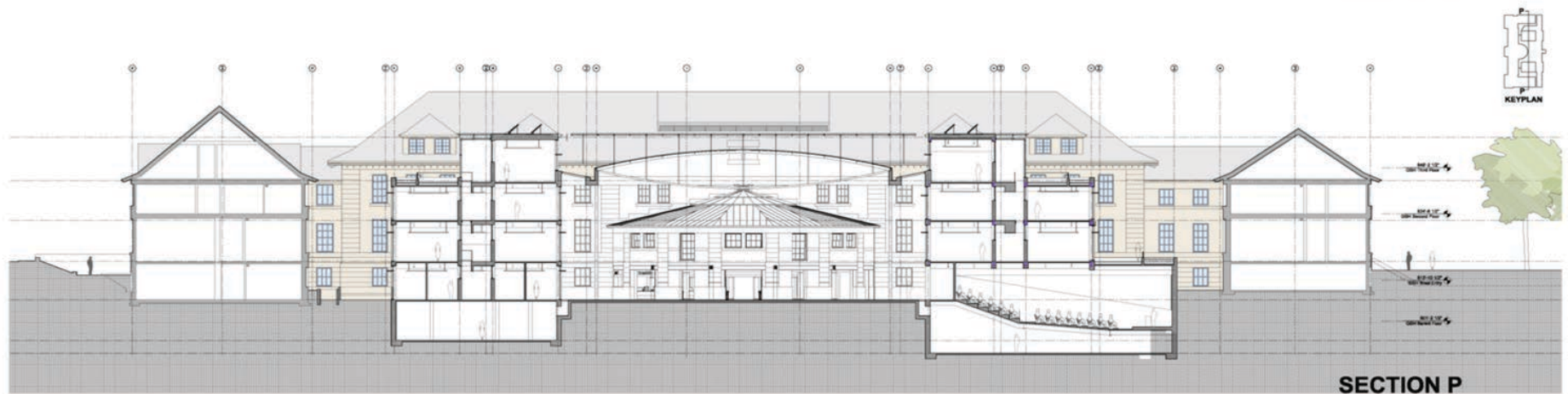
Cornell Casts / Collections



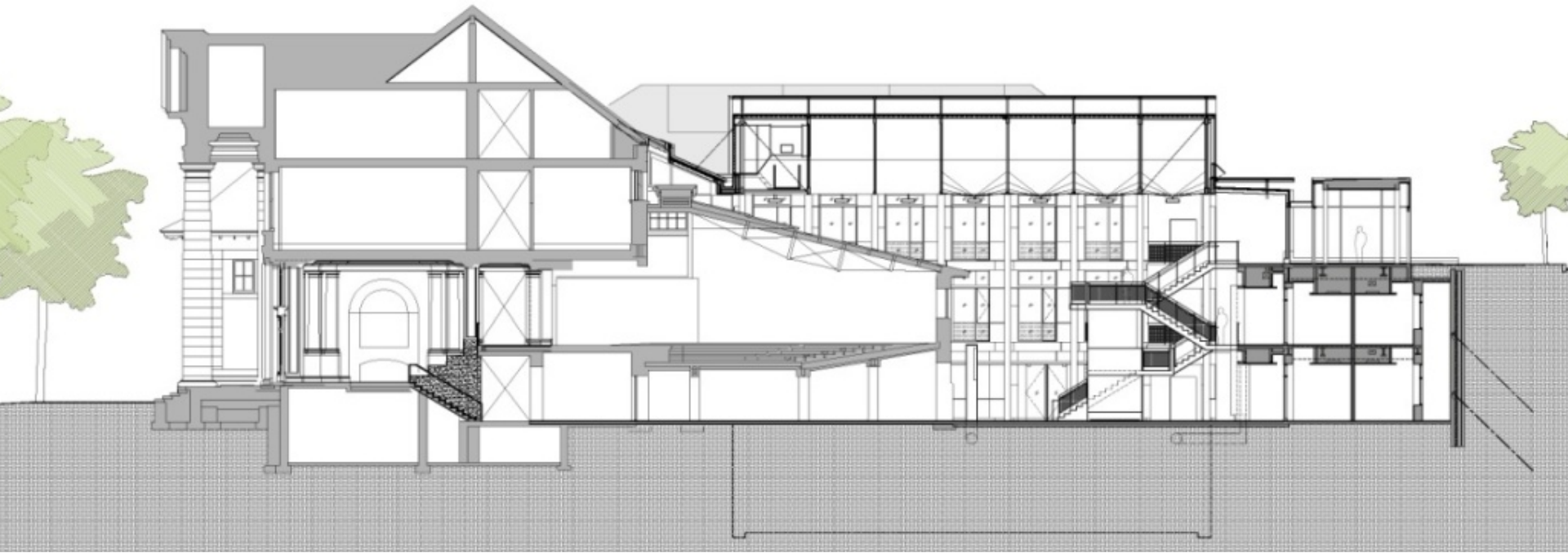
Gallery Space / Zones parallel w/ GSH/East Ave (Future Accommodation of Casts / Steel angles & Elec. Circuits)



Klarman Hall South/North Section looking West



South/North Sections thru Klarman Hall looking West



GSH – Klarman Hall Cross-Section looking North



Atrium View looking Northwest



Klarman Hall - South Court looking toward East Ave



Klarman Hall South Court looking West toward GSH



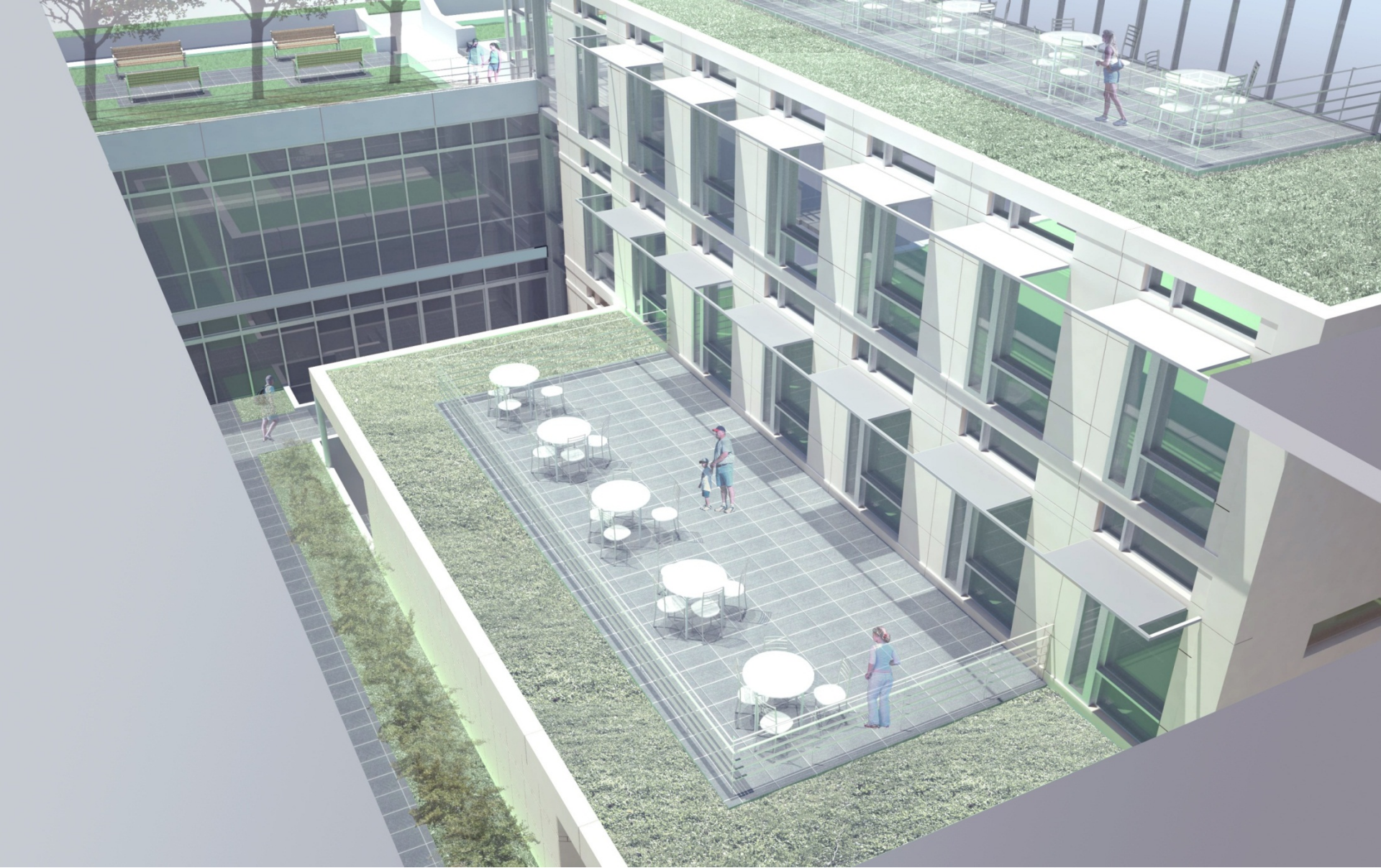
Klarman Hall South Court looking West toward GSH.



Klarman Hall North Court looking West toward GSH.



North Court Ground Floor looking West toward GSH.



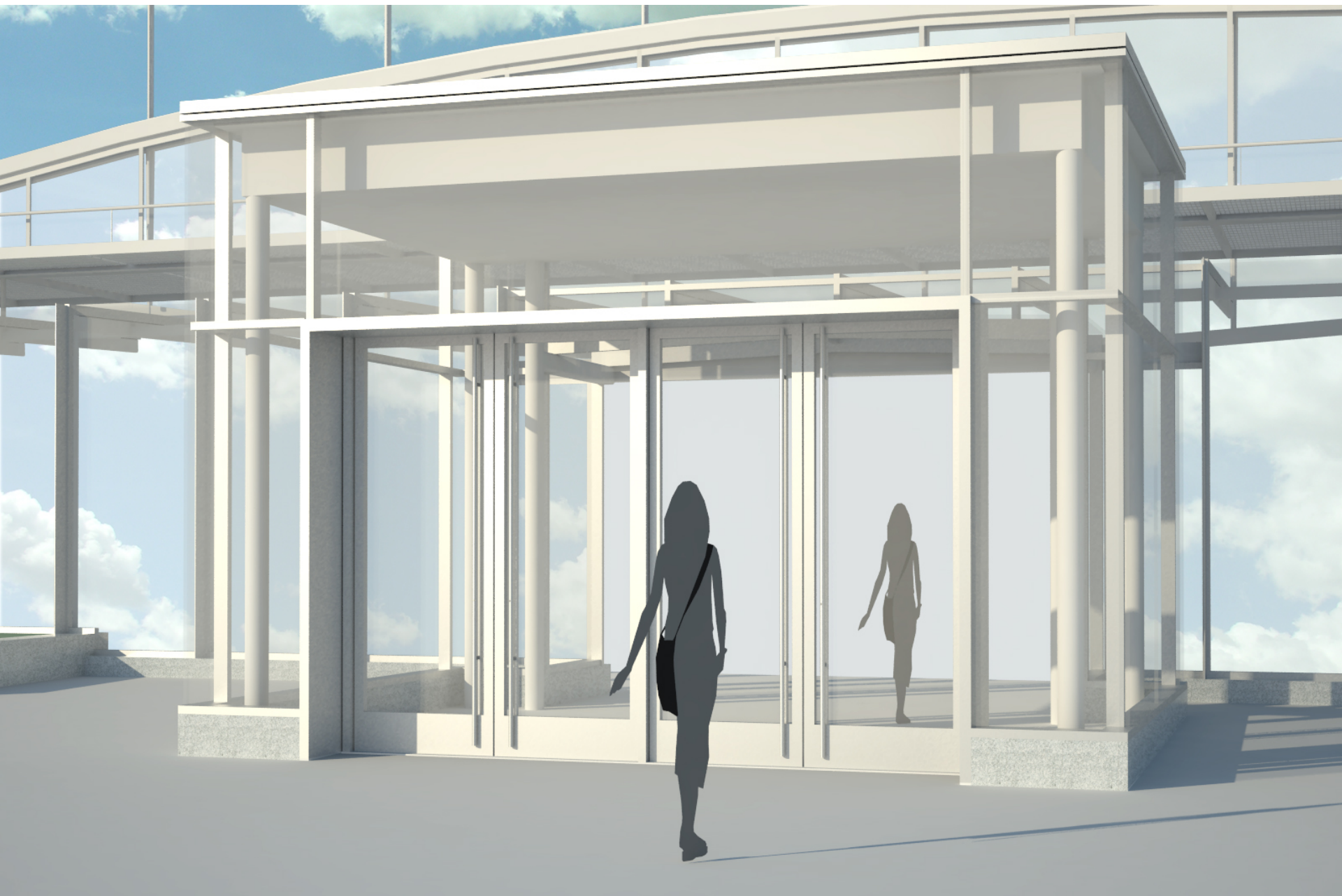
**North Court Aerial View Southeast toward East Ave
Showing 1st Flr. Level, Department Outdoor Terrace**



View from Rockefeller Hall and East Lawn



View of Klarman Hall from Bus Stop across East Ave.







Klarman Hall– East Avenue View looking South



Klarman Hall– East Avenue View looking North



Klarman Hall – an appropriate addition to GSH