



**RECEIVED**  
**JUN 29 2012**  
 DEPARTMENT OF  
 PLANNING & DEVELOPMENT

Bloomfield/Schon  
 660 LINCOLN AVE  
 SUITE 303  
 CINCINNATI OH 45206  
 (513) 241-6363

**CAYUGA PLACE TWO**  
 SOUTH CAYUGA STREET  
 ITHACA, NY 14850




ISSUE	DATE	DRAWING SET
1	20120622	SITE PLAN REVIEW

1 EAST RENDERING  
 G002 NOT TO SCALE

EAST  
 RENDERING

**G002**

ELEVATION KEY

-  PRECASTE CONCRETE PANEL
-  ALUMINUM WINDOW
-  TINTED GLAZING
-  PRECASTE CONCRETE PANEL




**CAYUGA PLACE TWO**  
SOUTH CAYUGA STREET  
ITHACA, NY 14850

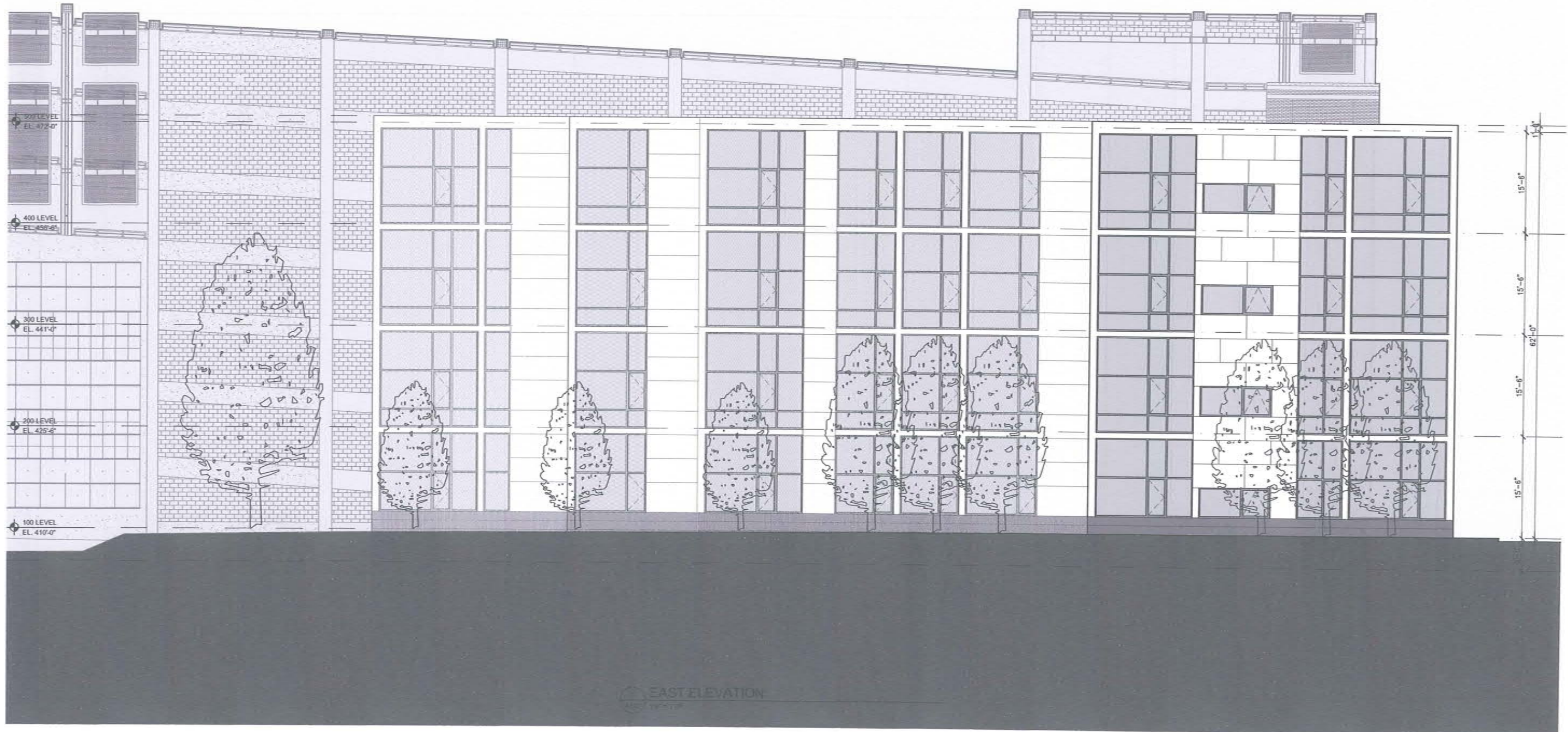
ISSUE	DATE	DRAWING SET
1	20120622	SITE PLAN REVIEW

NORTH  
ELEVATION

A301

ELEVATION KEY

-  PRECASTE CONCRETE PANEL
-  ALUMINUM WINDOW
-  TINTED GLAZING
-  PRECASTE CONCRETE PANEL



**CAYUGA PLACE TWO**  
SOUTH CAYUGA STREET  
ITHACA, NY 14850

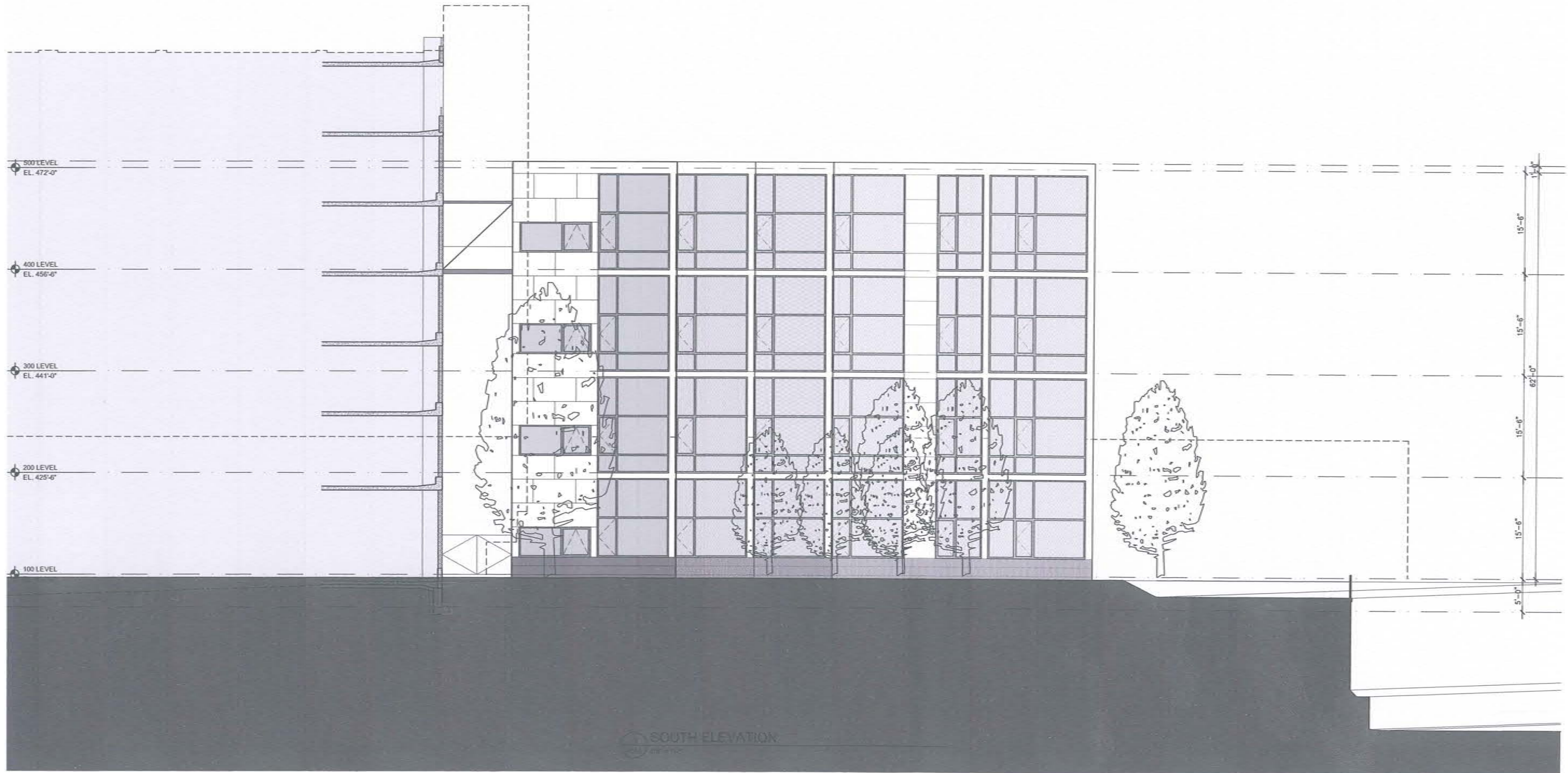
ISSUE DATE  
1 20120622  
DRAWING SET  
SITE PLAN REVIEW

EAST  
ELEVATION

**A302**

ELEVATION KEY

-  PRECASTE CONCRETE PANEL
-  ALUMINUM WINDOW
-  TINTED GLAZING
-  PRECASTE CONCRETE PANEL



**CAYUGA PLACE TWO**  
SOUTH CAYUGA STREET  
ITHACA, NY 14850

ISSUE	DATE	DRAWING SET
1	20120622	SITE PLAN REVIEW

SOUTH  
ELEVATION

**A303**

SOUTH ELEVATION  
08-11-12

ELEVATION KEY

-  PRECASTE CONCRETE PANEL
-  ALUMINUM WINDOW
-  TINTED GLAZING
-  PRECASTE CONCRETE PANEL
-  EXPOSED CONCRETE BLOCK



**CAYUGA PLACE TWO**  
 SOUTH CAYUGA STREET  
 ITHACA, NY 14850

ISSUE	DATE	DRAWING SET
1	20120622	SITE PLAN REVIEW

WEST  
 ELEVATION

A304